

View Ports



The strongest, most secure sight glass elements available, View Port's mechanically prestressed windows, are now available in a sanitary design for process applications.

Unlike some other sight glasses, View Port sight glasses meet the USP Type 1 standard for pharmaceutical use.

Described as offering the optics of glass and the strength of steel, these glass elements provide a level of safety, and a useful service life, well beyond that provided by conventional tempered glass or plastic in sanitary service. Even at the most extreme temperatures (as high as 536° F) or in overpressure situations, sudden, total failure that involve leakage or explosive shattering of the glass, essentially never occurs.

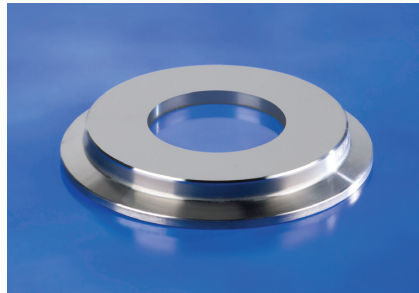
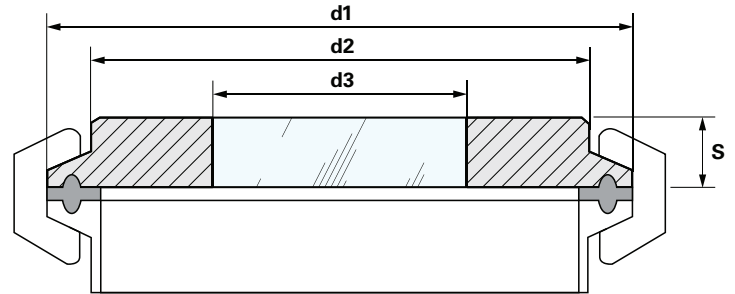
AVAILABLE IN:

Sanitary Tri-Clamp®
Bevel Seat
I-Line

Part Number	d1 Inch	d2 Inch	d3 Inch	S Inch	psig @ 536°F
RFVP-050-2205DSS	0.98	0.71	0.39	0.39	230
RFVP-075-2205DSS	0.98	0.71	0.39	0.39	230
RFVP-100-2205DSS	1.99	1.61	0.98	0.39	230
RFVP-150-2205DSS	1.99	1.61	0.98	0.39	230
RFVP-200-2205DSS	2.52	2.05	1.18	0.39	200
RFVP-250-2205DSS	3.05	2.72	1.38	0.39	200
RFVP-300-2205DSS	3.58	2.99	1.57	0.39	150
RFVP-400-2205DSS	4.69	4.02	2.17	0.47	150
RFVP-600-2205DSS	6.57	5.98	2.95	0.63	90
RFVP-800-2205DSS	8.56	7.80	3.94	0.71	90
RFVP-1000-2205DSS	10.55	9.65	4.72	0.79	90
RFVP-1200-2205DSS	12.56	11.81	5.51	0.87	80

Note:

Temperature and pressure apply to View Port only.



Applications

View Ports are manufactured to fit sanitary clamp connections. With simple, fast installation and no risk of breakage, this sleek, compact, one piece design provides a cleaner look, less bacteria traps, and unsurpassed safety. The View Port sight glass can be used as a viewable port mounted on a ferrule, a "cross" for inline visual flow indication or as a light port. Many other connection types are also available. Materials available include 2205 Duplex Stainless Steel, Hastelloy®, Monel®, and Inconel®.

Approvals & Technical Data

- USP Class VI (tested to confirm biocompatibility)
- BPE Compliant and TÜV Approved
- Sight glass fused to metal conforming to DIN7079
- Borosilicate glass to USP Type I and DIN7080
- Standard surface finish of 10 Ra μ-in (0.25μm)
- Material to ASTM/ASME, TÜV and DIN/EN standards
- Certificate of Conformity to EN 10204-3.1B or 3.1A
- Pressure Equipment Directive 97/23/EG

26 Brookfield Drive • Sparta, New Jersey 07871

973.579.2959 • 866-442-2959 Toll Free • 973.579.7275 Fax • www.rubberfab.com