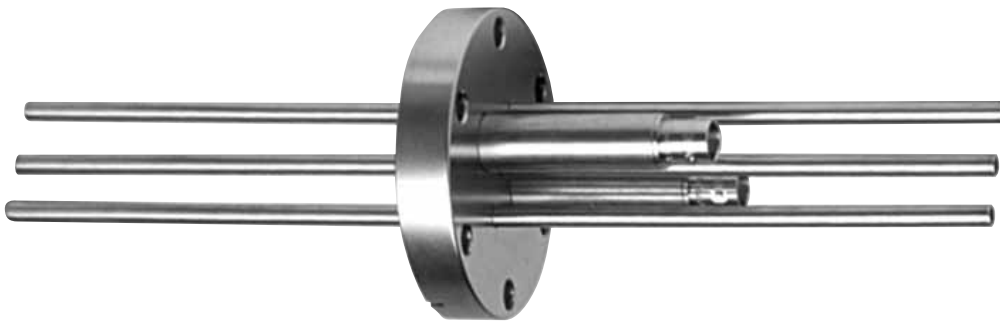


Thin Film Deposition - CF Flanged Crystal Feedthroughs



SPECIFICATIONS

Materials

Flanges: 304 stainless steel

Flange sizes: 1¹/₃ to 2³/₄ CF

Feedthrough: 304 stainless steel

Vacuum range: ≥1 x 10⁻⁹ Torr - High vacuum

Temperature range: ≤150°C

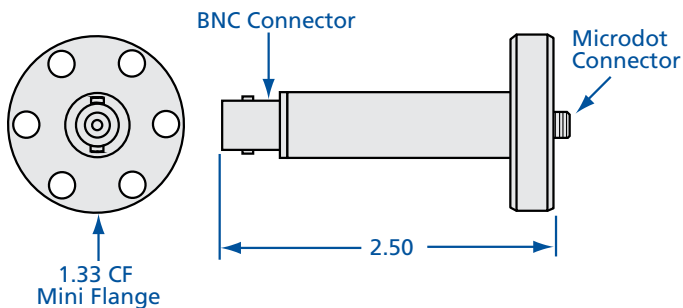
Leak rate: ≤10⁻⁹ standard cc/sec

CF Flanged Crystal Feedthroughs

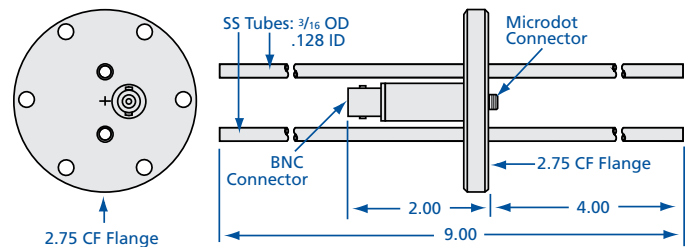
MODEL NUMBER	FLANGE TYPE	SENSOR CONNECTIONS	IN VAC CONNECTOR	EXTERNAL CONNECTOR	COOLING LINES	COMPRESSION FITTINGS	AIR LINES
CF-133-1	1.33 CF	1	Microdot	BNC	-	-	-
CF-275-1-W	2.75 CF	1	Microdot	BNC	2	-	-
CF-275-1-WC	1.33 CF	1	Microdot	BNC	2	✓	-
CFP-275-2-W	2.75 CF	2	Microdot	Microdot	2	-	1

Note: ISO, NW, and ASA flanged feedthroughs are available upon request. Call for pricing.

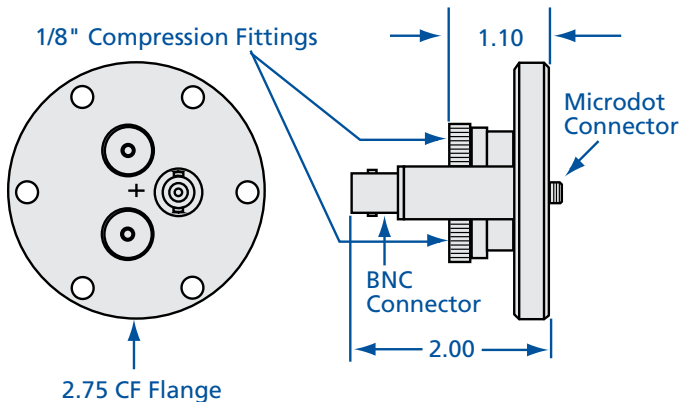
CF-133-1



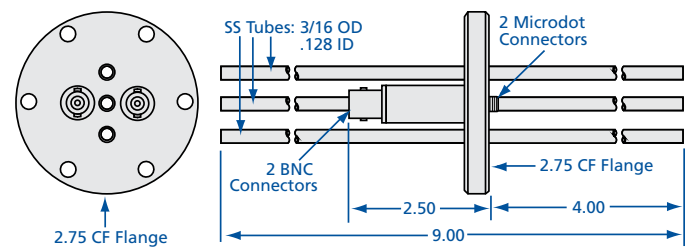
CF-275-1-W



CF-275-1-WC



CFP-275-2-W



REV 6/16

