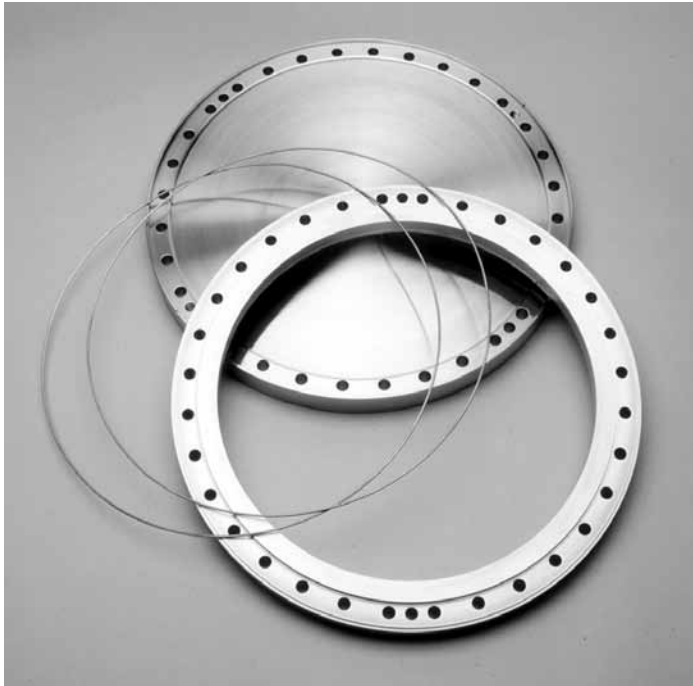


Flanges & Fittings - Wire Seal Flanges



SPECIFICATIONS

General: Nonrotatable flanges with clearance bolt holes

Nominal OD sizes: 12³/₈ to 27¹/₈ inches

Tube OD sizes: 10 to 24 inches

Materials

Flange: 304 stainless steel
(316L available on request)

Gaskets: Copper

Bolts: 18-8 stainless steel

Vacuum range: ≥1 x 10⁻¹³ Torr - UHV

Temperature range: -200° to 450°C

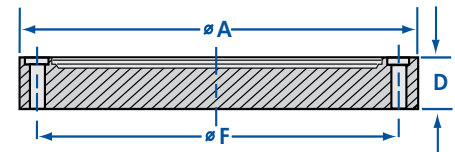
Wire Seal Flanges

MODEL NUMBER	OD A	B	C	D	E	F	BOLT HOLES
WS-12-000M	12.375	-	-	1.13	-	11.343	24
WS-12-1000M	12.375	9.750	10.020	1.13	0.630	11.343	24
WS-12-000F	12.375	-	-	1.13	-	11.343	24
WS-12-1000F	12.375	9.750	10.020	1.13	0.630	11.343	24
WS-14-000M	14.625	-	-	1.13	-	13.593	32
WS-14-1200M	14.625	11.750	12.020	1.13	0.630	13.593	32
WS-14-000F	14.625	-	-	1.13	-	13.593	32
WS-14-1200F	14.625	11.750	12.020	1.13	0.630	13.593	32
WS-17-000M	17.250	-	-	1.13	-	15.718	36
WS-17-1400M	17.250	13.750	14.020	1.13	0.630	15.718	36
WS-17-000F	17.250	-	-	1.13	-	15.718	36
WS-17-1400F	17.250	13.750	14.020	1.13	0.630	15.718	36
WS-19-000M	19.562	-	-	1.31	-	17.875	36
WS-19-1600M	19.562	15.750	16.020	1.31	0.630	17.875	36
WS-19-000F	19.562	-	-	1.31	-	17.875	36
WS-19-1600F	19.562	15.750	16.020	1.31	0.630	17.875	36
WS-22-000M	22.125	-	-	1.50	-	20.187	36
WS-22-1800M	22.125	17.750	18.020	1.50	1.000	20.187	36
WS-22-000F	22.125	-	-	1.50	-	20.187	36
WS-22-1800F	22.125	17.750	18.020	1.50	1.000	20.187	36
WS-27-000M	27.125	-	-	1.75	-	25.843	40
WS-27-2400M	27.125	23.625	24.020	1.75	1.125	25.843	40
WS-27-000F	27.125	-	-	1.75	-	25.843	40
WS-27-2400F	27.125	23.625	24.020	1.75	1.125	25.843	40

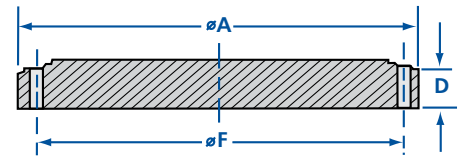
Model Number Definitions

M = Male flange F = Female flange

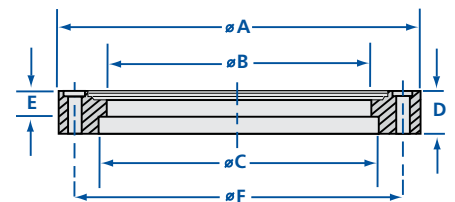
Female Blank



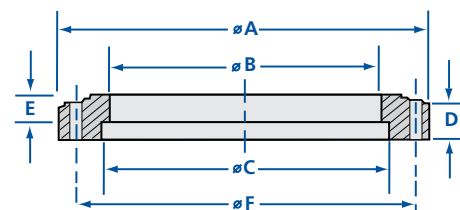
Male Blank



Female Bored



Male Bored



REV 6/16

