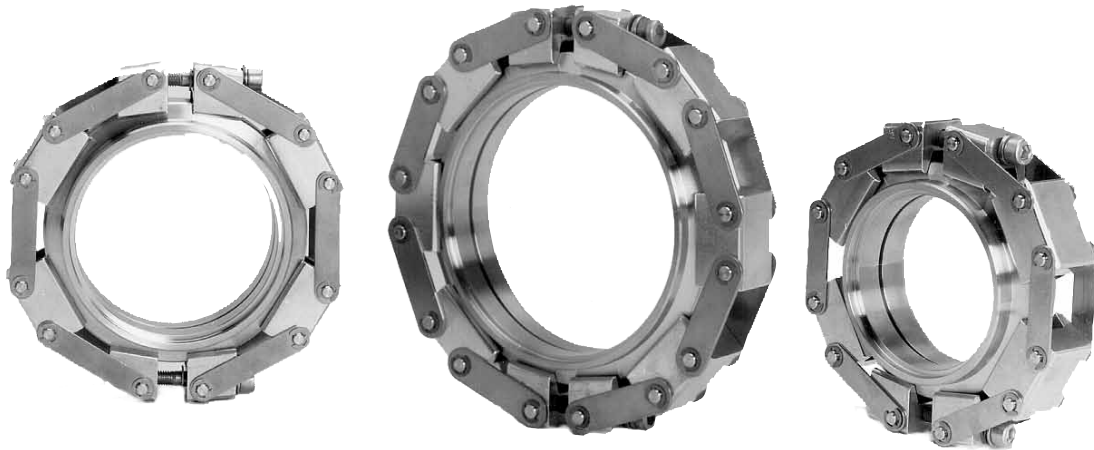
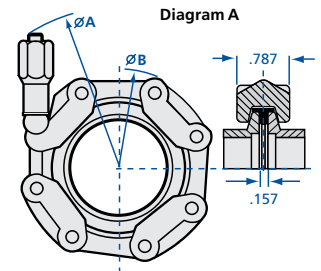


# Flanges & Fittings - Chain Clamps



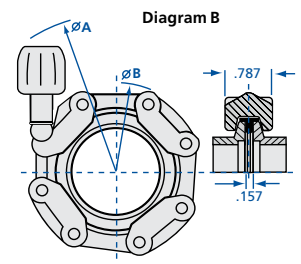
## Chain Clamps for NW-16 to 50 Flanges – Aluminum Links

MODEL NUMBER	DIAGRAM	APPLICATION	A	B	MAXIMUM TEMPERATURE	TORQUE (LB. IN.) ELASTOMER / METAL
NW-16-CC-AN	A	Metal or Elastomer Seals	4.53	2.36	150°C	9 / 22
NW-25-CC-AN	A	Metal or Elastomer Seals	4.92	2.76	150°C	13 / 26
NW-40-CC-AN	A	Metal or Elastomer Seals	5.32	3.35	150°C	18 / 39
NW-50-CC-AN	A	Metal or Elastomer Seals	5.98	4.13	150°C	22 / 44



## Chain Clamps for NW-16 to 50 Flanges - Teflon Coated Links\*

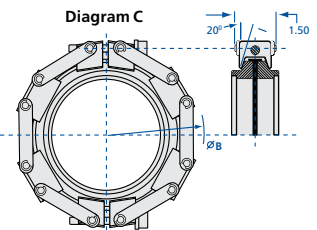
MODEL NUMBER	DIAGRAM	APPLICATION	A	B	MAXIMUM TEMPERATURE	TORQUE (LB. IN.) ELASTOMER / METAL
NW-16-CC-TN	A	No radius, metal/elastomer	4.53	2.36	150°C	9 / 22
NW-25-CC-TN	A	No radius, metal/elastomer	4.92	2.76	150°C	13 / 26
NW-40-CC-TN	A	No radius, metal/elastomer	5.32	3.35	150°C	18 / 39
NW-50-CC-TN	A	No radius, metal/elastomer	5.98	4.13	150°C	22 / 44



\*Not radiation resistant

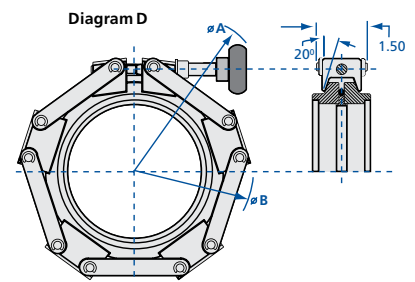
## Chain Clamps for NW-63 Flanges

MODEL NUMBER	DIAGRAM	APPLICATION	A	B	MAXIMUM TEMPERATURE	TORQUE (LB. IN.) ELASTOMER / METAL
NW-63-CCV-AN	B	Elastomer seals only	6.69	4.72	100°C	-
NW-63-CC-AN	A	Metal or elastomer seals	6.30	4.72	150°C	22 / 44



## Chain Clamps for 80 and 100 mm Tapered Flanges

MODEL NUMBER	DIAGRAM	APPLICATION	A	B	MAXIMUM TEMPERATURE	TORQUE (LB. IN.)
NW-80-CCV-AS	D	Elastomer seals only	9.61	6.06	150°C	-
NW-80-CC-TS	C	Metal seals only	-	6.30	150°C	75
NW-100-CCV-AS	D	Elastomer seals only	10.08	6.77	150°C	-
NW-100-CC-TS	C	Metal seals only	-	7.09	150°C	88



REV 6/16

