

Flanges & Fittings - CF Flanges 13¹/₄, 14, 14¹/₂ & 16¹/₂ Inch Nominal OD



CF Flanges - 13¹/₄ Inch Nominal OD

MODEL NUMBER	TYPE	DIAGRAM	OD A	ID B	C	D	E	BOLT HOLES	DIAMETER OR THREAD
1325-000N	Blank	A	13.25	-	-	-	12.055	30	.390
1325-1000N	Bored	B	13.25	9.875	10.020	0.500	12.055	30	.390
1325-000NT	Blank	A	13.25	-	-	-	12.055	30	3/8"-24
1325-1000NT	Bored	B	13.25	9.875	10.020	0.500	12.055	30	3/8"-24
1325-000R	Blank	C	13.25	-	-	-	12.055	30	.390
1325-1000R	Bored	D	13.25	9.875	10.020	0.500	12.055	30	.390
1325-000RT	Blank	C	13.25	-	-	-	12.055	30	3/8"-24
1325-1000RT	Bored	D	13.25	9.875	10.020	0.500	12.055	30	3/8"-24

SPECIFICATIONS

General: Rotatable and nonrotatable with tapped or clearance bolt holes

Materials

Flanges: 304 stainless steel
(316L available upon request)

Torque: 345 inch/lbs.

Vacuum range

Metal seal: $\geq 1 \times 10^{-13}$ Torr - UHV
Elastomer seal: $\geq 1 \times 10^{-8}$ Torr - High vacuum

Temperature Range

Metal seal: -200°C to 450°C
Elastomer seal: -20°C to 150°C

CF Flanges - 14 Inch Nominal OD

MODEL NUMBER	TYPE	DIAGRAM	OD A	ID B	C	D	E	BOLT HOLES	DIAMETER OR THREAD
1400-000N	Blank	A	14.00	-	-	-	12.810	30	.390
1400-1200N	Bored	B	14.00	11.875	12.030	0.500	12.810	30	.390
1400-000NT	Blank	A	14.00	-	-	-	12.810	30	3/8"-24
1400-1200NT	Bored	B	14.00	11.875	12.030	0.500	12.810	30	3/8"-24
1400-000R	Blank	C	14.00	-	-	-	12.810	30	.390
1400-1200R	Bored	D	14.00	11.875	12.030	0.500	12.810	30	.390
1400-000RT	Blank	C	14.00	-	-	-	12.810	30	3/8"-24
1400-1200RT	Bored	D	14.00	11.875	12.030	0.500	12.810	30	3/8"-24

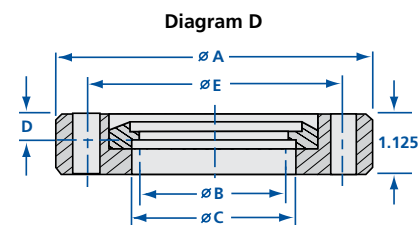
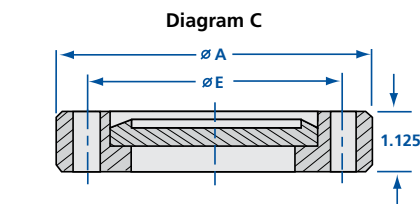
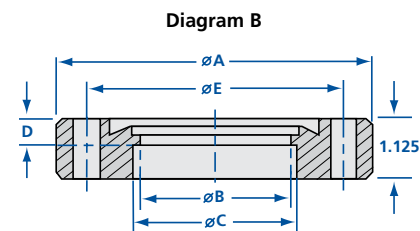
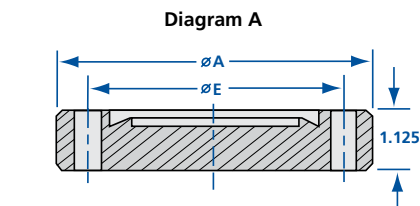


CF Flanges - 14¹/₂ Inch Nominal OD

MODEL NUMBER	TYPE	DIAGRAM	OD A	ID B	C	D	E	BOLT HOLES	DIAMETER OR THREAD
1450-000N	Blank	A	14.50	Blank	-	-	13.310	32	0.390
1450-1200N	Bored	B	14.50	11.875	12.020	0.500	13.310	32	0.390
1450-000NT	Blank	A	14.50	Blank	-	-	13.310	32	3/8"-24
1450-1200NT	Bored	B	14.50	11.875	12.020	0.500	13.310	32	3/8"-24
1450-000R	Blank	C	14.50	Blank	-	-	13.310	32	0.390
1450-1200R	Bored	D	14.50	11.875	12.020	0.500	13.310	32	0.390
1450-000RT	Blank	C	14.50	Blank	-	-	13.310	32	3/8"-24
1450-1200RT	Bored	D	14.50	11.875	12.020	0.500	13.310	32	3/8"-24

CF Flanges - 16¹/₂ Inch Nominal OD

MODEL NUMBER	TYPE	DIAGRAM	OD A	ID B	C	D	E	BOLT HOLES	DIAMETER OR THREAD
1650-000N	Blank	A	16.50	Blank	-	-	15.310	36	0.390
1650-1400N	Bored	B	16.50	13.750	14.020	0.500	15.310	36	0.390
1650-000NT	Blank	A	16.50	Blank	-	-	15.310	36	3/8"-24
1650-1400NT	Bored	B	16.50	13.750	14.020	0.500	15.310	36	3/8"-24
1650-000R	Blank	C	16.50	Blank	-	-	15.310	36	0.390
1650-1400R	Bored	D	16.50	13.750	14.020	0.500	15.310	36	0.390
1650-000RT	Blank	C	16.50	Blank	-	-	15.310	36	3/8"-24
1650-1400RT	Bored	D	16.50	13.750	14.020	0.500	15.310	36	3/8"-24



Model Number Definitions

N = Nonrotatable, clearance bolt holes NT = Nonrotatable, tapped bolt holes R = Rotatable, clearance bolt holes RT = Rotatable, tapped bolt holes M = Metric tapped bolt holes

REV 6/16

